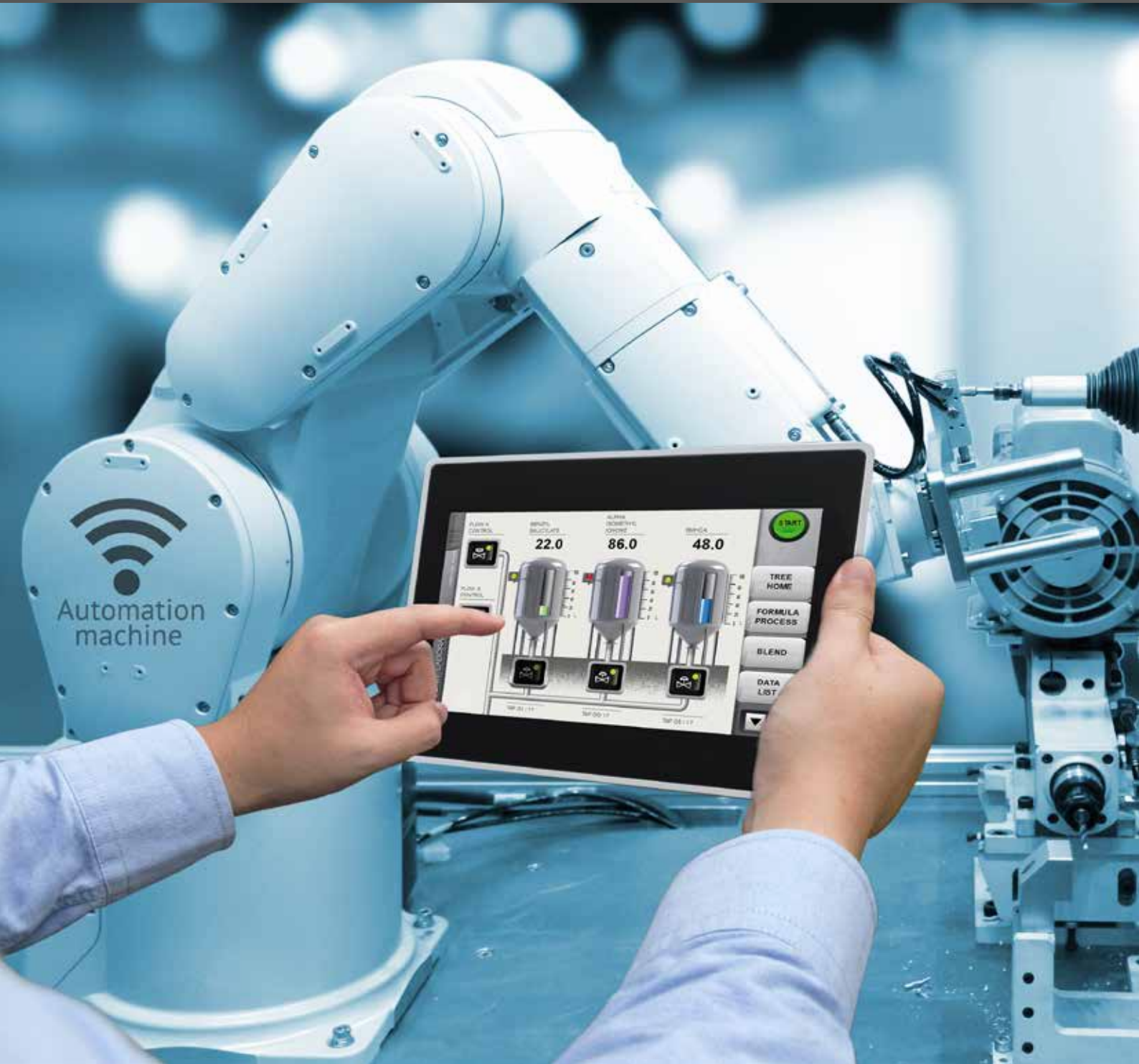


Panasonic

Human machine interfaces

HM SERIES



HM series touch terminals ... more than panels



■ HM series touch terminals

All terminals are equipped with Ethernet ports and support VNC technology. The web server architecture is based on current HTML5 web technology providing users with advanced control and remote monitoring from any browser, any device (smartphone, tablet, or computer). The ability to capture, store and share data in higher-level structures makes the HM series

the perfect choice for integrating systems across the entire enterprise. The HM series supports SVG graphics, Javascript, Panasonic PLC, OPC UA Server / Client gateway, Modbus TCP (RTU), Ethernet/IP and S7 Ethernet driver. This makes the HM series a perfect tool for IIoT implementation and Industry 4.0 in a controlled and safety-aware manner.

Programming software HMWin – simply the best

Thanks to HMWin's scalable and high-performance architecture, it is possible to implement all applications – from the smallest to the largest. Whatever the scope, every application can be expanded at any time.

Thanks to the user-friendly HMWin interface, customers can quickly and efficiently create and apply HMI applications. HMWin creates the bridge between the factory floor to the corporate data management level. As one of the key communication protocols for Industry 4.0 and IoT, OPC UA is the “heart” of the software. HMWin is a must-have companion for factory environments. View information about your plant whenever and/or wherever you need it. From PLCs, sensors, servo drives to touch terminals, you will be able to connect any piece of equipment to HMWin.

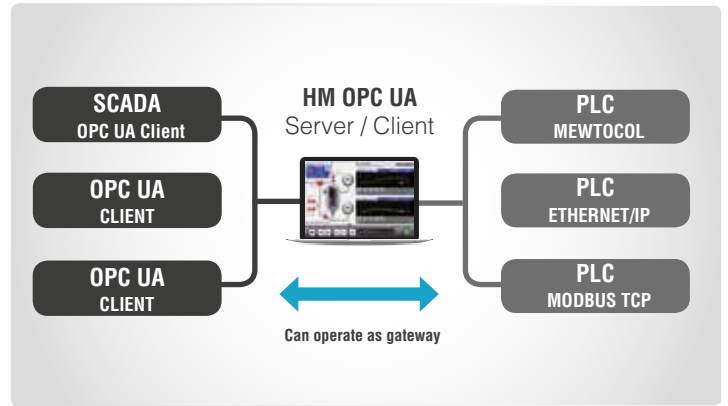


Ready for INDUSTRY 4.0 and IoT



OPC UA is one of the key communication protocols for INDUSTRY 4.0 and IoT

- › Available for both the HM500 and the new HMe series
- › All tags in the HMWin project database can be published automatically
- › Automatic gateway function
- › Supports OPC UA alarms, historical alarms, and trends



■ HMWin now enhanced with HM4web

HM4web is the most complete tool so far for creating full HTML5-based interfaces.



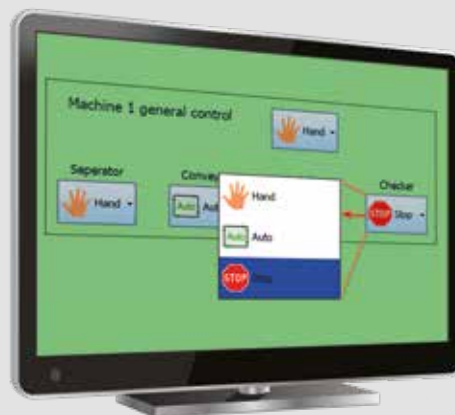
HM4web



- › Trend and scatter diagrams with support of gestures
- › Multilanguage
- › Javascript
- › Push data for improved performance on browsers
- › Supports multi-core platforms in browsers
- › Option to disable login requests
- › Possibility to require a user action on a selected alarm
- › Supports groups of alarms
- › Supports alarms from the PLC
- › Supports the project property "WebPageRequest"

■ HMWin Combobox Widget

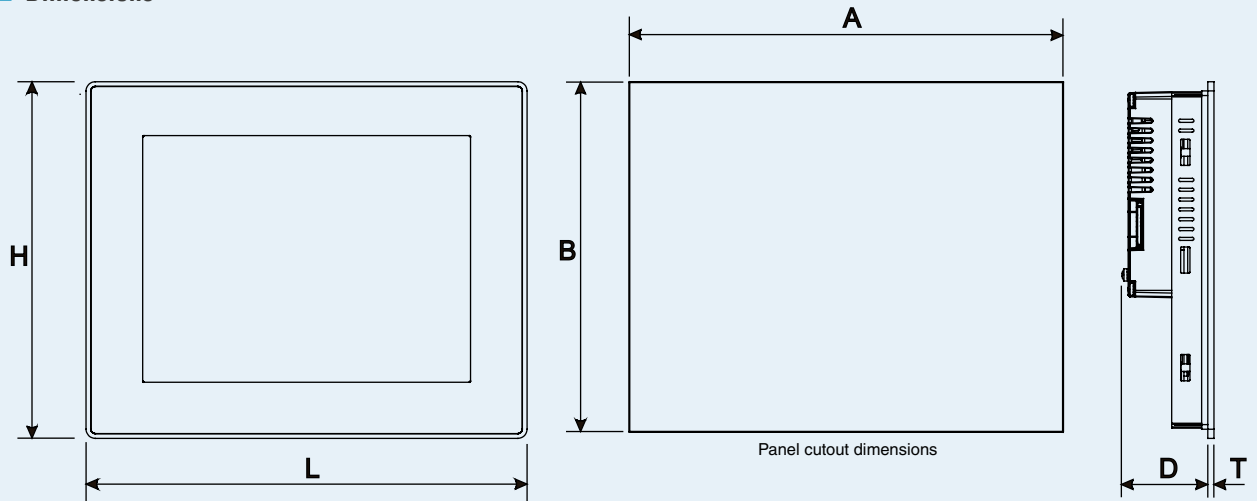
- › New widget, easier programming
- › Allows full screen operation
- › Options for text, text + icon, icon
- › Support if gestures
- › Ideal for creating selection menus





	HM504	HM507	HM510	HM513	HMe04	HMe07	HMe10
Display size	4.3" TFT 16:9	7" TFT 16:9	10.4" TFT	13.3" TFT 16:9	4.3" TFT 16:9	7" TFT 16:9	10.1" TFT 16:9
Resolution	480 x 272, WQVGA	800 x 480, WVGA	800 x 600, SVGA	1280 x 800, WXGA	480x272, WVGA	800 x 480, WVGA	1024 x 600, WVGA
Backlight	LED	LED	LED	LED	LED	LED	LED
Brightness	150 cd/m ² typ.	300 cd/m ² typ.	300 cd/m ² typ.	300 cd/m ² typ.	200 Cd/m ² typ	200 cd/m ² typ	200 cd/m ² typ
Dimming	Yes	Yes	Yes	Yes	Yes	Yes	Yes
Colors	64K	64K	64K	64K	64K	64K	64K
Touchscreen	Analog resistive	Analog resistive	Analog resistive	Analog resistive	Analog Resistive	Analog resistive	Analog resistive
Portrait mode	Yes	Yes	Yes	Yes	Yes	Yes	Yes
User memory	128MB flash	128MB flash	256MB flash	256MB flash	2 GB Flash	4GB flash	4GB flash
Serial port (Universal)	RS232, RS485, RS422, software configurable	RS232, RS485, RS422, software configurable	RS232, RS485, RS422, software configurable	RS232, RS485, RS422, software configurable	RS-232, RS-485, RS-422, Software configurable	RS232, RS485, RS422, software configurable	RS232, RS485, RS422, software configurable
Ethernet port	2x 10/100Mbit with integrated switch	2x 10/100Mbit with integrated switch	2x 10/100Mbit with integrated switch	2x 10/100Mbit with integrated switch	1x 10/100 Mbit	1x 10/100Mbit	1x 10/100Mbit
USB port	1 host interface version 2.0	2 host interfaces (1x version 2.0, 1x version 1.1)	2 host interfaces (1x version 2.0, 1x version 1.1)	2 host interfaces (1x version 2.0, 1x version 1.1)	1 Host interface v.2.0	1 host interface version 2.0	1 host interface version 2.0
Vector graphics	Yes, supports SVG	Yes, supports SVG	Yes, supports SVG	Yes, supports SVG	Yes, includes SVG support	Yes, supports SVG	Yes, supports SVG
Dynamic objects	Yes	Yes	Yes	Yes	Yes	Yes	Yes
TrueType fonts	Yes	Yes	Yes	Yes	Yes	Yes	Yes
Alarms	Yes	Yes	Yes	Yes	Yes	Yes	Yes
Alarm history	Yes	Yes	Yes	Yes	Yes	Yes	Yes
Recipes	Yes	Yes	Yes	Yes	Yes	Yes	Yes
Password	Yes	Yes	Yes	Yes	Yes	Yes	Yes
Trends	Yes	Yes	Yes	Yes	Yes	Yes	Yes
Multilanguage management	Yes	Yes	Yes	Yes	Yes	Yes	Yes
Real time clock	Yes, with battery	Yes, with battery	Yes, with battery	Yes, with battery	Yes, Supercapacitor	Yes, supercapacitor	Yes, supercapacitor
Battery	Rechargeable lithium battery	Rechargeable lithium battery	Rechargeable lithium battery	Rechargeable lithium battery	No	No	No
Expansion slots	1 optional plug-in	2 Optional Plugin	2 Optional Plugin	2 Optional Plugin	No	No	No
SD card slot	Yes	Yes	Yes	Yes	No	No	No
Voltage	24VDC (10 to 32VDC)	24VDC (10 to 32VDC)	24VDC (10 to 32VDC)	24VDC (10 to 32VDC)	24 Vdc (18 to 32 Vdc)	24VDC (18 to 32VDC)	24VDC (18 to 32VDC)
Max. current consumption (typ.)	0.55A at 24VDC (max.)	0.7A at 24VDC (max.)	1A at 24VDC (max.)	1.2A at 24VDC (max.)	0.25A at 24Vdc (max.)	0.3A at 24VDC (max.)	0.38A at 24VDC (max.)
Operating temperature	0 to 50°C	0 to 50°C	0 to 50°C	0 to 50°C	0 to 50 °C	0 to 50°C	0 to 50°C
Storage temperature	-20 to +70°C	-20 to +70°C	-20 to +70°C	-20 to +70°C	-20 to +70 °C	-20 to +70°C	-20 to +70°C
Operating and storage humidity	5 to 85% RH non-condensing	5 to 85% RH non-condensing	5 to 85% RH non-condensing	5 to 85% RH non-condensing	5 - 85%, RH non-condensing	5 to 85% RH non-condensing	5 to 85% RH non-condensing
Weight	Approx. 1.0kg	Approx. 1.0kg	Approx. 2.1kg	Approx. 2.8kg	Approx. 0.4 Kg	Approx. 0.6kg	Approx. 1.0kg
Front panel (L x H)	147 x 107mm	187 x 147mm	287 x 232mm	336 x 267mm	147x107 mm	187 x 147mm	282 x 197mm
Panel cutout (A x B)	136 x 96mm	176 x 136mm	276 x 221mm	326 x 256mm	136x96 mm	176 x 136mm	271 x 186mm
Depth (D + T)	56 + 4mm	47 + 4mm	56 + 4mm	56 + 4mm	29 + 5 mm	29 + 5mm	29 + 6mm
Degree of protection (front)	IP66	IP66	IP66	IP66	IP66	IP66	IP66
Degree of protection (rear)	IP20	IP20	IP20	IP20	IP20	IP20	IP20
Certification	CE, cULus	CE, cULus	CE, cULus	CE, cULus	CE, cULus	CE, cULus	CE, cULus
Warranty	5 years	5 years	5 years	5 years	3 Years	3 years	3 years

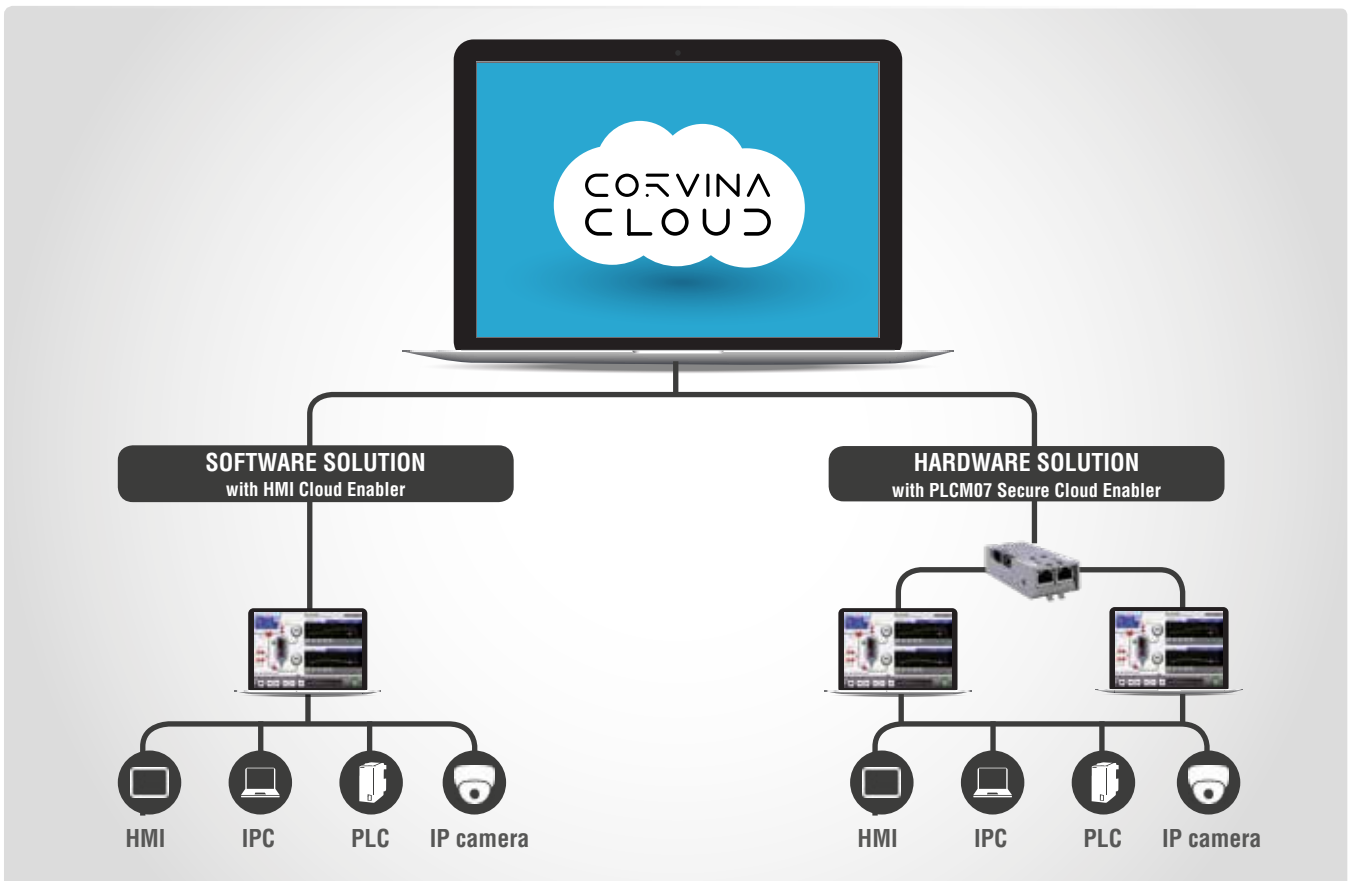
■ Dimensions



■ Cloud solution for the HM series

HMI Cloud Enabler is a light-weight application that can be used on HMIs for connecting to Corvina Cloud and configuring it. It is a multi-platform application based on OpenVPN and

designed for embedded devices running Windows CE/ARM. HMIs with HMI Cloud Enabler applications work like a gateway for end points.



HMI Cloud Enabler



- › Connects the HMI/PLC to the cloud via the same Ethernet port
- › Available for all touch terminals of the HM series
- › Compatible with already installed HM touch terminals with free BSP upgrade
- › Cloud configuration with local HM touch terminal
- › Light-weight applications run directly on the HM touch terminal

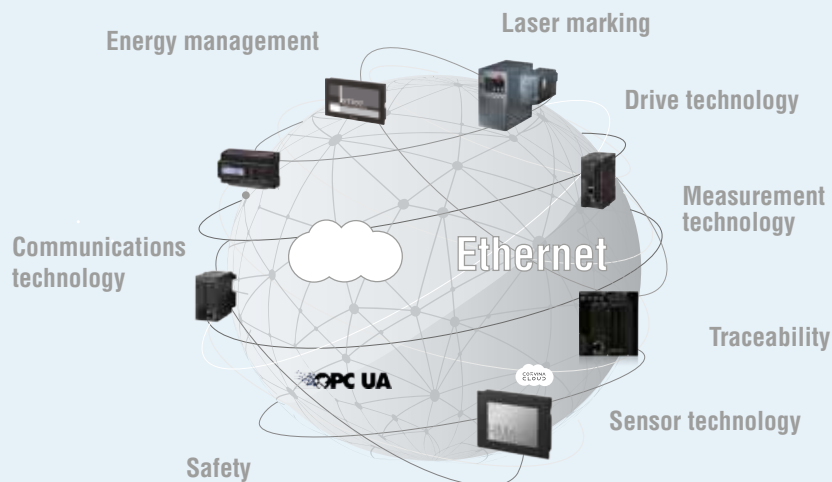
PLCM07



- › Separate LAN & WAN networks: LAN for HM series/PLC and WAN for cloud connection (2 x 10/100Mbit)
- › Available for the HM series as a standard plug-in
- › Can be used as open VPN client standard solution for connection with OpenVPN server
- › Configuration possible with a simple HTML Web browser
- › Designed to improve security & performance
- › Technical data:
 - CPU ARM Cortex-A8 1GHz
 - RAM 512MB DDR3
 - Flash memory 4GB
 - Operating system Linux 3.12
 - 1 USB host interface version 2.0
 - MicroSD card slot

Panasonic – ready for digital automation

Find out about our innovative products for Industry 4.0 and the Internet of Things



www.panasonic-electric-works.com



HM500 series

Product	Description	Part number
HM504 touch terminal 4.3 inch	2 x Ethernet port, 480x272 dots, WQVGA, TFT color 64k	AIHM504
HM507 touch terminal 7.0 inch	2 x Ethernet port, 800x480 dots, WVGA, TFT color 64k	AIHM507
HM510 touch terminal 10.4 inch	2 x Ethernet port, 800x600 dots, SVGA, TFT color 64k	AIHM510
HM513 touch terminal 13.3 inch	2 x Ethernet port, 1280x800 dots, WXGA, TFT color 64k	AIHM513



HMe series

Product	Description	Part number
HMe04 touch panel 4.3 inch	1 x Ethernet ports, 480x272 dots, WVGA, TFT color 64k	AIHMe04
HMe07 touch terminal 7.0 inch	1 x Ethernet port, 800x480 dots, WVGA, TFT color 64k	AIHMe07
HMe10 touch terminal 10.1 inch	1 x Ethernet port, 1024x600 dots, WVGA, TFT color 64k	AIHMe10



HM accessories

Product	Description	Part number
Communication cassette serial RS232 port	Additional communication cassette with serial RS232 port for AIHM5xx panel	AIHMPLCM03
Communication cassette serial RS485 port	Additional communication cassette with serial RS485 port for AIHM5xx panel	AIHMPLCM04
Communication cable RS232, COM port	Communication cable RS232 FP0R/FPX/FPΣ (Sigma)/FP7 COM port (open wires) <-> HM series touch terminal (9-pin Sub-D), 2m	AIHM8023220
Communication cable RS485, COM port	Communication cable RS485 FP0R/FPX/FPΣ (Sigma)/FP7 COM port (open wires) <-> HM series touch terminal (9-pin Sub-D), 2m	AIHM8048520
Communication cable RS232, TOOL port	Communication cable RS232 FP PLC TOOL port (Mini DIN) <-> HM series touch terminal (SUB-D9), 2m	AIHM8123220



North America

Europe

Asia Pacific

China

Japan

Panasonic Electric Works

Please contact our Global Sales Companies in:

Europe

▶ Headquarters	Panasonic Electric Works Europe AG	Robert-Koch-Straße 100, 85521 Ottobrunn, Tel. +49 89 45354-1000, Fax +49 89 45354-2111, www.panasonic-electric-works.com
▶ Austria	Panasonic Electric Works Austria GmbH	Josef Madersperger Str. 2, 2362 Biedermannsdorf, Tel. +43 (0) 2236-26846, Fax +43 (0) 2236-46133 www.panasonic-electric-works.at
	Panasonic Industrial Devices Materials Europe GmbH	Ennshafenstraße 30, 4470 Enns, Tel. +43 (0) 7223 883, Fax +43 (0) 7223 88333, www.panasonic-electronic-materials.com
▶ Benelux	Panasonic Electric Works Sales Western Europe B.V.	De Rijn 4, (Postbus 211), 5684 PJ Best, (5680 AE Best), Netherlands, Tel. +31 (0) 499 372727, Fax +31 (0) 499 372185, www.panasonic-electric-works.nl
▶ Czech Republic	Panasonic Electric Works Europe AG, organizační složka	Administrative centre PLATINIUM, Veverí 3163/111, 616 00 Brno, Tel. +420 541 217 001, Fax +420 541 217 101, www.panasonic-electric-works.cz
▶ France	Panasonic Electric Works Sales Western Europe B.V.	Succursale française, 10, rue des petits ruisseaux, 91370 Verrières Le Buisson, Tél. +33 (0) 1 6013 5757, Fax +33 (0) 1 6013 5758, www.panasonic-electric-works.fr
▶ Germany	Panasonic Electric Works Europe AG	Robert-Koch-Straße 100, 85521 Ottobrunn, Tel. +49 (0) Tel. +49 (0) 45354-1000, Fax +49 (0) 45354-2111, www.panasonic-electric-works.de
▶ Hungary	Panasonic Electric Works Europe AG	Magyarországi Közvetlen Kereskedelmi Képviselet, 1117 Budapest, Neumann János u. 1., Tel. +43 2236 26846-25, Mobile: +36 20 264 9896, Fax +43 2236 46133, www.panasonic-electric-works.hu
▶ Ireland	Panasonic Electric Works UK Ltd.	Irish Branch Office, Dublin, Tel. +353 (0) 14600969, Fax +353 (0) 14601131, www.panasonic-electric-works.co.uk
▶ Italy	Panasonic Electric Works Italia srl	Via del Commercio 3-5 (Z.I. Ferlina), 37012 Bussolengo (VR), Tel. +39 0456752711, Fax +39 0456700444, www.panasonic-electric-works.it
▶ Nordic Countries	Panasonic Electric Works Europe AG Panasonic Eco Solutions Nordic AB	Filial Nordic, Knarrarnäsgatan 15, 164 40 Kista, Sweden, Tel. +46 859476680, Fax +46 859476690, www.panasonic-electric-works.se
▶ Poland	Panasonic Electric Works Polska sp. z o.o	Jungmansgatan 12, 21119 Malmö, Tel. +46 40 697 7000, Fax +46 40 697 7099, www.panasonic-fire-security.com
▶ Spain	Panasonic Electric Works España S.A.	ul. Wołoska 9A, 02-583 Warszawa, Tel. +48 42 230 9633, www.panasonic-electric-works.pl
▶ Switzerland	Panasonic Electric Works Schweiz AG	Barajas Park, San Severo 20, 28042 Madrid, Tel. +34 913293875, Fax +34 913292976, www.panasonic-electric-works.es
▶ United Kingdom	Panasonic Electric Works UK Ltd.	Grundstrasse 8, 6343 Rotkreuz, Tel. +41 (0) 41 7997050, Fax +41 (0) 41 7997055, www.panasonic-electric-works.ch
		Sunrise Parkway, Linford Wood, Milton Keynes, MK14 6 LF, Tel. +44 (0) 1908 231555, Fax +44 (0) 1908 231599, www.panasonic-electric-works.co.uk

North & South America

▶ USA	Panasonic Industrial Devices Sales Company of America	629 Central Avenue, New Providence, N.J. 07974, Tel. 1-908-464-3550, Fax 1-908-464-8513, www.pewa.panasonic.com
--------------	--	---

Asia Pacific/China/Japan

▶ China	Panasonic Electric Works Sales (China) Co. Ltd.	Level 2, Tower W3, The Towers Oriental Plaza, No. 2, East Chang An Ave., Dong Cheng District, Beijing 100738, Tel. +86-10-5925-5988, Fax +86-10-5925-5973
▶ Hong Kong	Panasonic Industrial Devices Automation Controls Sales (Hong Kong) Co., Ltd.	RM1205-9, 12/F, Tower 2, The Gateway, 25 Canton Road, Tsimshatsui, Kowloon, Hong Kong, Tel. +852-2956-3118, Fax +852-2956-0398
▶ Japan	Panasonic Corporation	1048 Kadoma, Kadoma-shi, Osaka 571-8686, Japan, Tel. +81-6-6908-1050, Fax +81-6-6908-5781, www.panasonic.net
▶ Singapore	Panasonic Industrial Devices Automation Controls Sales Asia Pacific	300 Beach Road, #16-01 The Concourse, Singapore 199555, Tel. +65-6390-3811, Fax +65-6390-3810